

What are the characteristics of a complex civilization?

Why are the Aztecs, Maya, and Inca considered civilizations?

Where and when did the Aztec, Maya, and Inca civilizations occur?

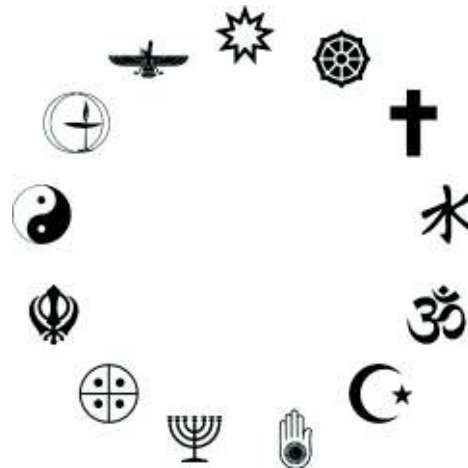
How were the early complex civilizations of the Americas similar to and different from each other?

Lesson 1:

Early Western Hemisphere Civilizations

Opening

What are the characteristics of modern civilizations?



Vocabulary

What does a society need in order to be considered a civilization?



Vocabulary

civilization - An advanced state of human society, in which a high level of culture, science, industry, and government has been reached.



Characteristics of Civilization

What would be the characteristics of the civilizations that created these places?



Maya



Aztec



Inca



Characteristics of Civilization - A

What characteristics of civilization are shown?



Maya



Aztec



Inca



Characteristics of Civilization - B

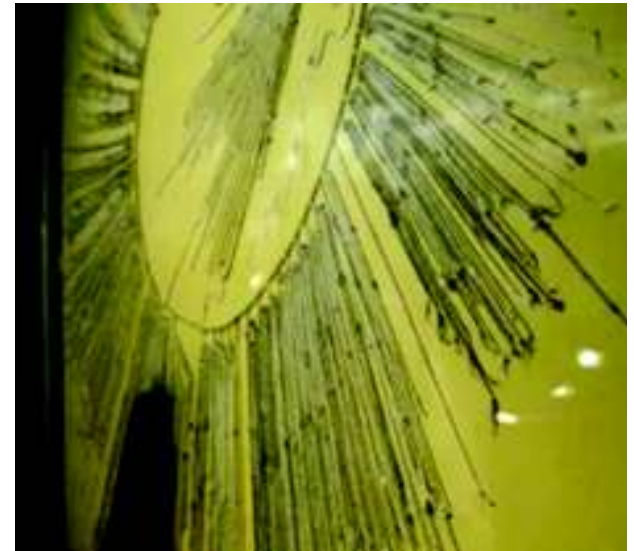
What characteristics of civilization are shown?



Maya



Aztec



Inca



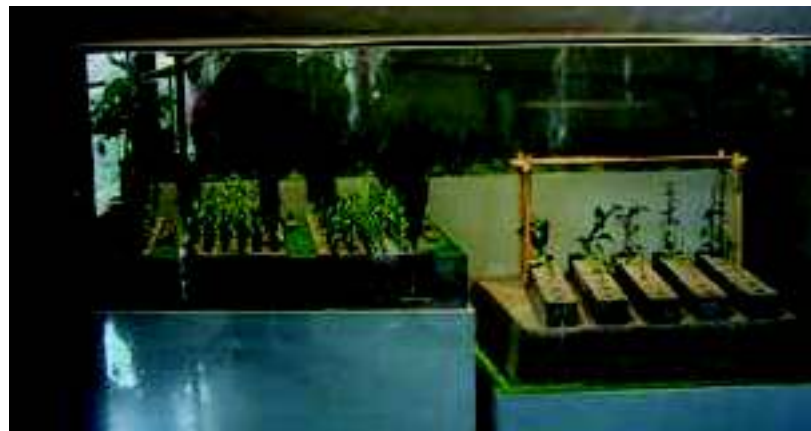
Characteristics of Civilization - C

What characteristics of civilization are shown?

Maya



Aztec

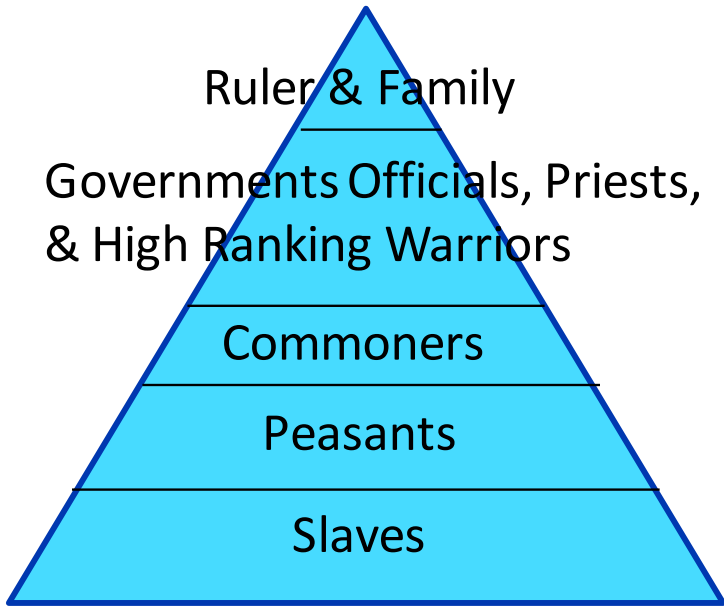


Inca

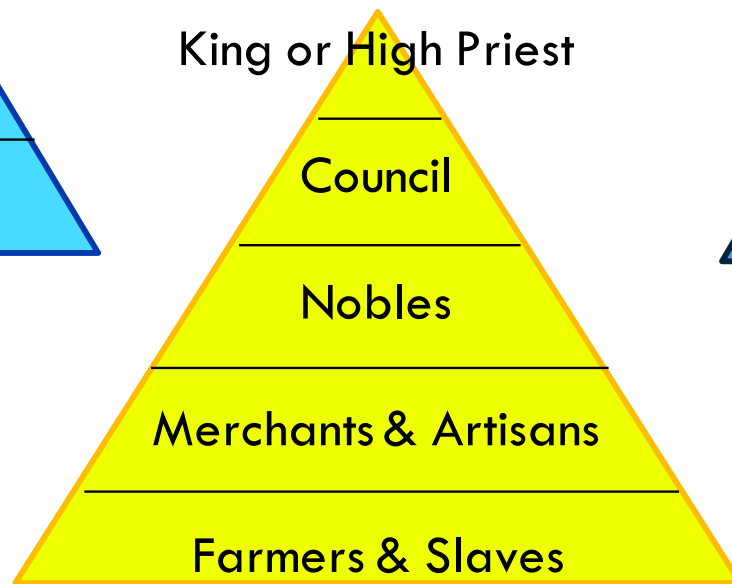


Characteristics of Civilization - D

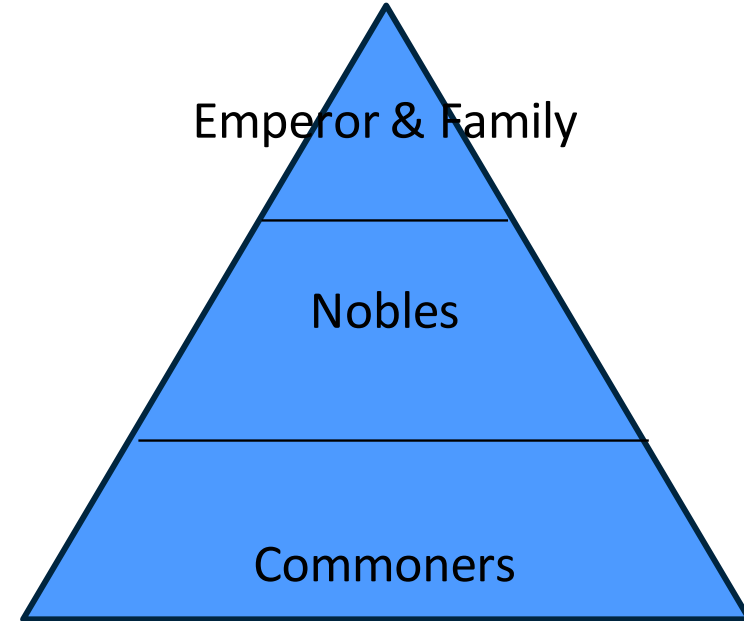
What characteristics of civilization are shown?



Aztec



Maya



Inca

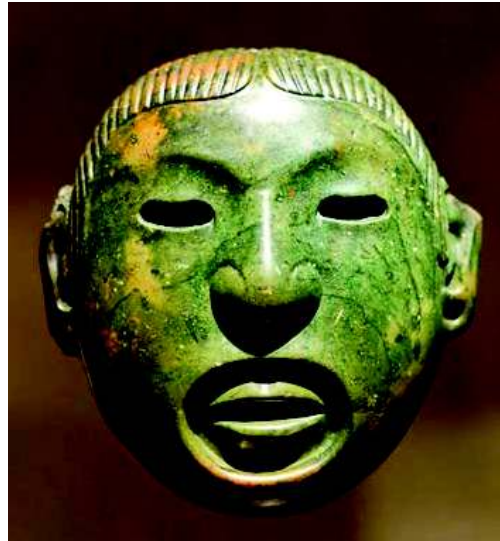


Characteristics of Civilization - E

What characteristics of civilization are shown?



Maya



Aztec



Inca



Characteristics of Civilization - F

What characteristics of civilization are shown?

